



## *Pitt County Sheriff's Office*

### *Forensic Service's Unit*

---

#### **Joint Appropriations Subcommittee on Justice and Public Safety**

- Forensic Unit Capabilities & Stats



## *Pitt County Sheriff's Office*

### *Forensic Service's Unit*

---

#### **➤ Brief History**

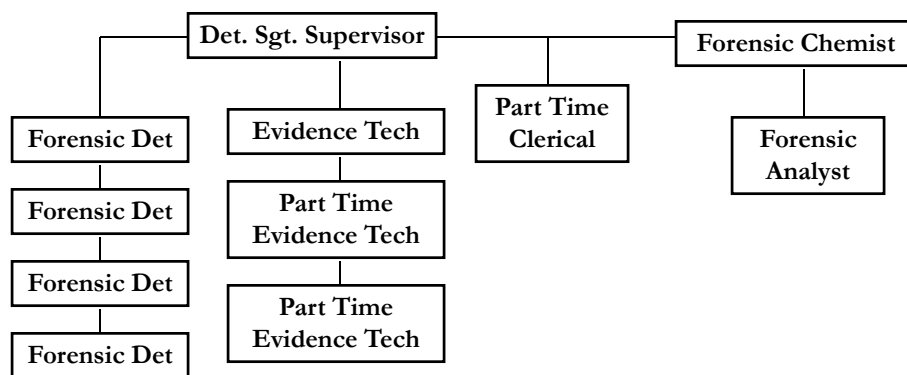
- 1999-Lab construction process begins
- 2001-Crime Lab completed and operational
- 2004-Marijuana testing begins
- 2005-Forensic chemistry program proposed
- 2006-Forensic chemistry program setup
- 2006-Forensic chemistry testing begins



## *Pitt County Sheriff's Office*

### *Forensic Service's Unit*

#### Organization Chart



## *Pitt County Sheriff's Office*

### *Forensic Service's Unit*



#### Capabilities/Services

- Crime scene investigation
- Latent print analysis
- Forensic Chemistry
- Forensic video analysis



## *Pitt County Sheriff's Office*

### *Forensic Service's Unit*

#### ➤ Agencies that we served

##### •Pitt County Agencies

- |                 |                   |
|-----------------|-------------------|
| ✓ Ayden PD      | ✓ PCC PD          |
| ✓ Bethel PD     | ✓ PCABC           |
| ✓ ECU PD        | ✓ PC Fire Marshal |
| ✓ Farmville PD  | ✓ Vident PD       |
| ✓ Greenville PD | ✓ Winterville PD  |
| ✓ Grifton PD    |                   |



## *Pitt County Sheriff's Office*

### *Forensic Service's Unit*

#### ➤ Agencies that we served

##### •Other Agencies

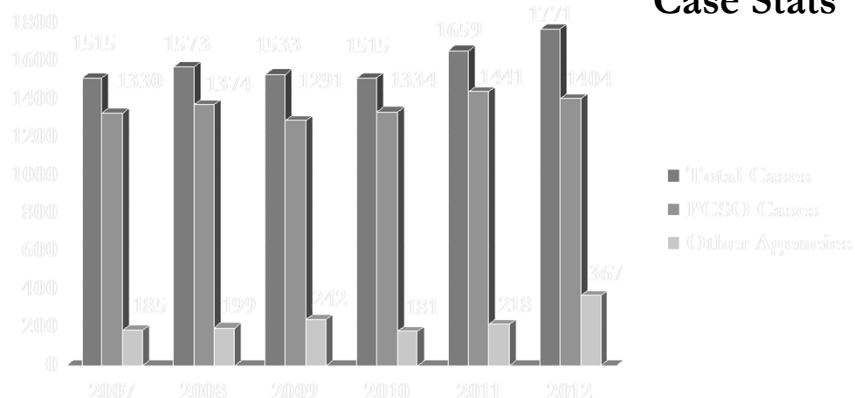
- |                     |               |                     |
|---------------------|---------------|---------------------|
| ✓ ALE               | ✓ ECSO        | ✓ Windsor PD        |
| ✓ NC Wildlife       | ✓ GCSO        | ✓ Jacksonville PD   |
| ✓ NC Highway Patrol | ✓ LCSO        | ✓ Williamston PD    |
| ✓ NC DMV            | ✓ OCSO        | ✓ Roanoke Rapids PD |
| ✓ MCSO              | ✓ DCSO        | ✓ Lewiston PD       |
| ✓ BCSO              | ✓ HCSO        | ✓ Washington PD     |
| ✓ CCSO              | ✓ New Bern PD |                     |



## *Pitt County Sheriff's Office*

### *Forensic Service's Unit*

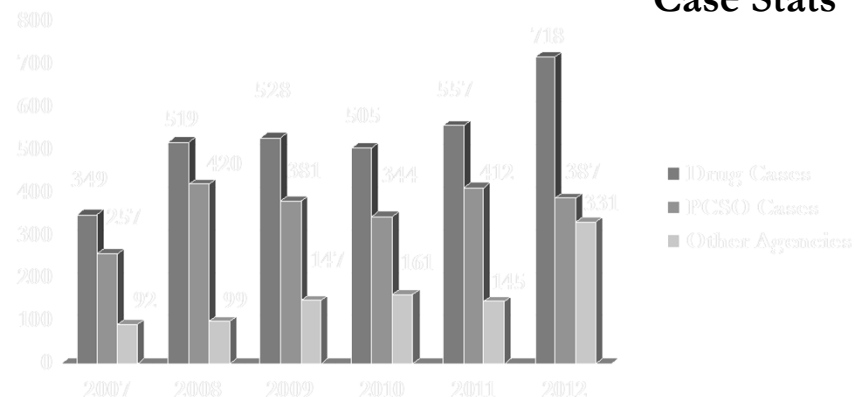
#### Case Stats



## *Pitt County Sheriff's Office*

### *Forensic Service's Unit*

#### Case Stats





## *Pitt County Sheriff's Office*

### *Forensic Service's Unit*

---

➤ Cost of operation minus salaries and benefits

- Maintenance Agreements- \$23,000
- Consumables - \$55,000



## *Pitt County Sheriff's Office*

### *Forensic Service's Unit*

---

➤ Questions Are Welcome